

Introduction

This report is an addendum to Lighting and Shading Impacts assessed in the Environmental Impact Statement for the Redevelopment of Tara Street Station, March 2001.

This report assesses the daylight and sunlight overshadowing performance for the revised design of the Tara Street Station Redevelopment, Dublin. Assessment is made of the following:

- Sunlight access to buildings and spaces on and around the development.
- Daylight access to buildings and spaces on and around the development.

Computational simulation has been used to analyse the daylight and sunlight overshadowing performance of the development through simulation of base and proposed conditions. Figure 3 shows an aerial view of the site with the base condition. The demolition of this building is proposed as part of the Tara Street Station Redevelopment scheme.

This report considers the base conditions to be the access to direct daylight and sunlight that is apparent with the existing buildings on the development site in place.

This report considers the proposed conditions to be the access to daylight and sunlight around the development that is likely to be apparent with the proposed Tara Street Station in place.

Figures 1 and 2 show example simulation images.

Figure 1 - Daylight simulation image with proposed condition

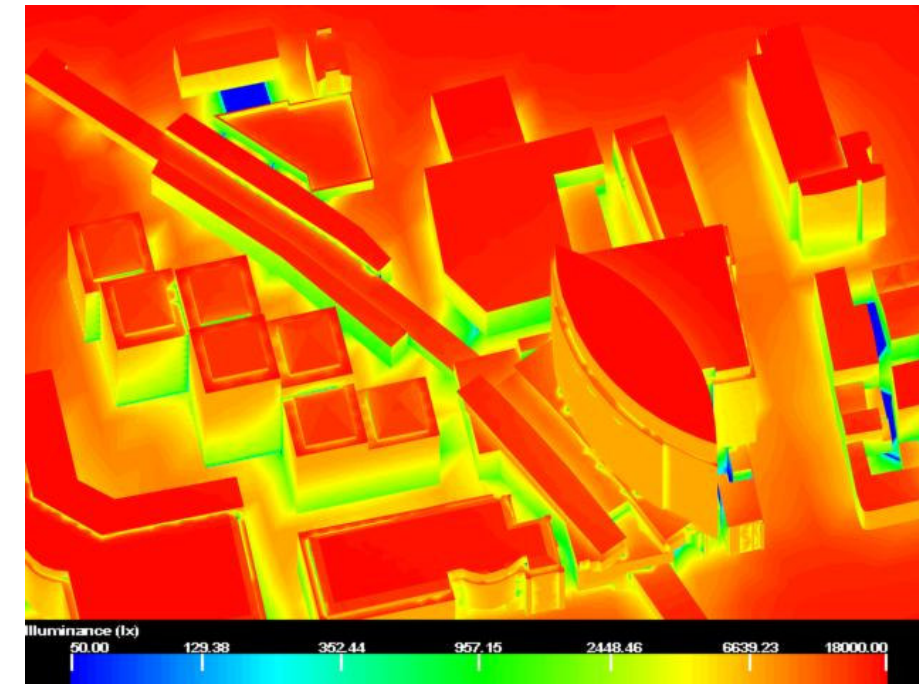


Figure 2 - Sunlight simulation image with base condition

